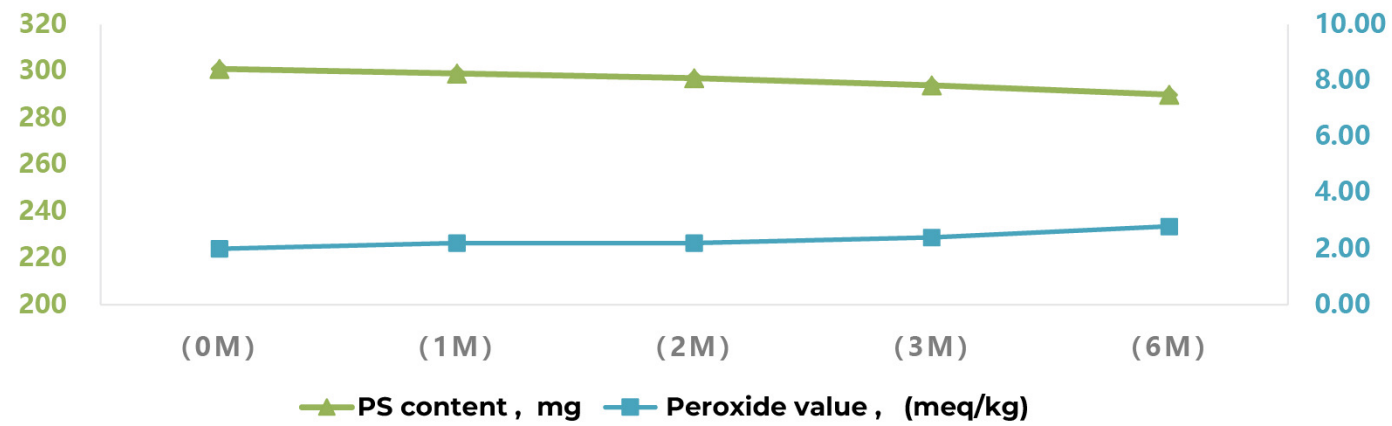


Trend chart of acceleration stability index for tablets made of Rimind PS™ 50% DC Granule

Acceleration Conditions : 37 °C± 2 °C, 75%±5%



## Dosage and time

100-800mg daily

Any time of the day / Pre-workout

## You may claim

- Natural Fermentation
- Non-GMO
- No Allergens
- Soy-Free
- Gluten-Free
- Vegan Friendly



## Reference

1. Ma X, et al. Front Aging Neurosci. 2022 Aug 3;14:975176.
2. Kato-Kataoka A, et al. j Clin Biochem Nutr. 2010;47(3):246-255.
3. Moré MI, et al. Adv Ther. 2014 Dec;31(12):1247-62.
4. Cenacchi T, et al. Aging (Milano). 1993 Apr;5(2):123-33.
5. Bruton A, et al. J Altern Complement Med. 2021 Apr;27(4):312-322.
6. Kingsley, M., et al. Sports Med 36,657-669(2006).
7. Guo J, et al. Biomolecules. 2024 Oct 12;14(10):1293.
8. Duan, Huilian, et al. Journal of Affective Disorders 369 (2025): 35-42.



## Rimind PS™ Phosphatidylserine —Excellent Stability and Application Performance



## ABOUT

Phosphatidylserine (PS) is a naturally occurring phospholipid that is found in high concentrations in the brain. It plays a key role in facilitating communication between neurons, promoting healthy brain aging, and enhancing cognitive performance.

PS is the ingredient approved by the FDA to carry a qualified health claim for cognitive function.



## Benefits

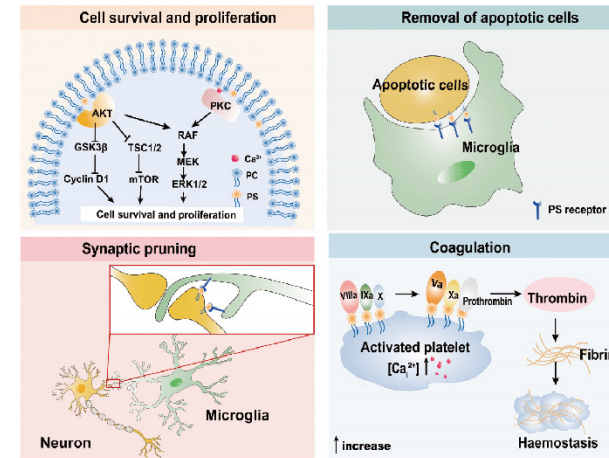
- Protecting neurons from damage<sup>[1]</sup>
- Improving neurotransmitter function<sup>[1]</sup>
- Boosting short-term memory<sup>[2]</sup>
- Maintaining cognitive flexibility<sup>[3][4]</sup>
- Supporting focus and attention<sup>[5]</sup>
- Boosting athletic performance<sup>[6]</sup>

## How does it work

As we age, our brains don't stay quite as sharp as they once were. Try a new way to help focus and attention! Enter PS, a naturally occurring phospholipid that plays a crucial role in brain function. PS is involved in cell survival and proliferation, removal of apoptotic cells, synaptic pruning, and coagulation.<sup>[7]</sup>

## Our Advantages

- Leading Standard Setter for PS in China
- Exclusive US Patent
- Available in multiple specifications suitable for softgels, capsules, and tablets



## Improves the cognitive function

In a RCT study shown PS can improve different cognitive functions of mild cognitive impairment (MCI) patients. especially short-term memory, and increase serum n-3 PUFAs and neurotransmitters levels.<sup>[8]</sup>

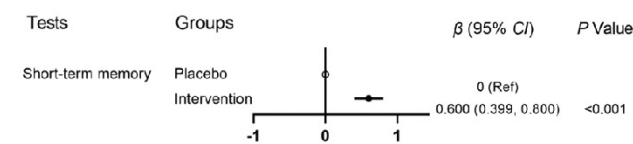


Fig. Longitudinal analysis of intervention on cognitive function between two groups.

## Specifications

Product Type	Application Form					
	Tablet	Capsule	Sachet	Softgel	Gummy	Dairy
Rimind PS® PS Granule (Min.50%)	★	★				
Rimind PS® PS Powder (Min.20%/50%/60%/70%)			★	★	★	★



## 50% DC Granule Rimind PS™ — Excellent Stability and application performance

Direct-compression Phosphatidylserine that runs cleanly on your press and addresses PS over-oxidation issues

## Why DC Granule Rimind PS™

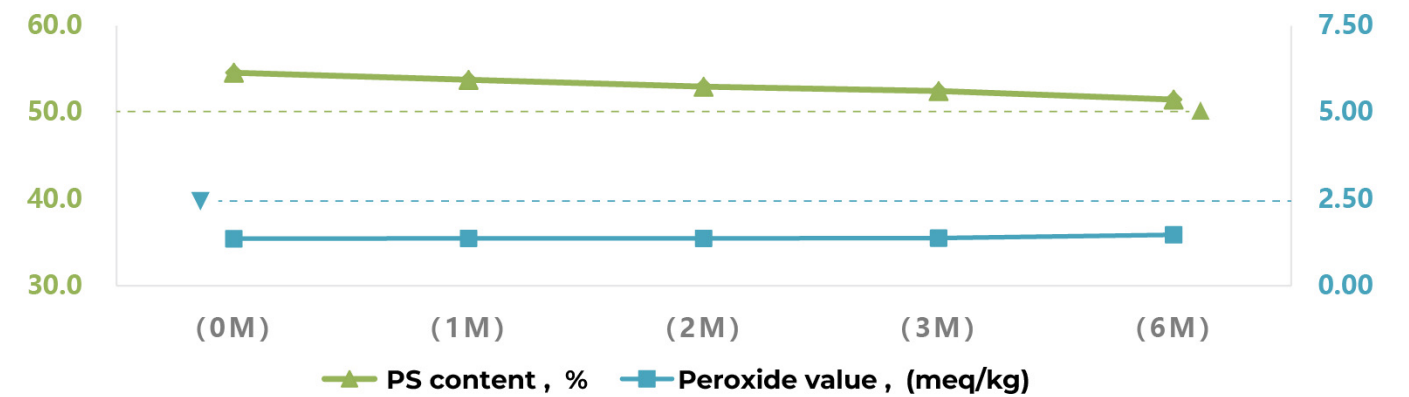
- Punch Sticking-free in Tableting
- Free of Off-odors in shelf life
- Peroxide Value < 2.5 meq/kg



## Stability data

Trend chart of acceleration stability index for Rimind PS™ 50% DC Granule

Acceleration Conditions: 37 °C ± 2 °C, 75% ± 5%



### Enhanced Experience, Better Compliance

Unlike common PS supplements prone to off-odors, Rimind PS ensures your product remains odor-free for long-term consumer compliance.

### Safer and More Efficient

Low peroxide value means the product is barely oxidized, guaranteeing greater safety by avoiding the intake of oxidized substances. Meanwhile, the stable content of Phosphatidylserine ensures superior efficacy.